



FREEDOM CHARTER

A 48-HOUR ESCAPE ON A LUXURY POWER YACHT IS A TASTE OF THE HIGH LIFE.

PHOTOGRAPHS BY JUSTIN POLKEY

Rocking very gently on her moorings at the V&A Marina, Cape Town, the Princess Emma is fully equipped and ship-shape for a weekend cruise to Clifton Beach and on to Simon's Town. To save time and traffic snarl-ups, the guests have chosen to fly in on an Execheli chopper, directly to the V&A Waterfront Heliport. The 25m, 78 ton luxury vessel designed for cruising, delivers exhilarating performance from twin 2 000 hp engines with a comfortable cruising speed of 17 knots and a top speed of 30 knots. The yacht, built by Princess Yachts (recently acquired by LVMH, a French company that has in its stable a number of other exclusive brands, including Louis Vuitton and Moët et Chandon) sports all the latest navigational aids and safety equipment, and is manned by a highly qualified skipper and crew.

For more information on Execheli's Robinson R-44 chopper, see page 40.

[Him] Collared shirt R4 150, Paul Smith. Shorts R695, Gant. Blazer R11 500, also Paul Smith. Tom Ford Aviators R3 190, Extreme Eyewear. Maurice Lacroix watch R11 500, S Bacher. Belt R550, Geri.

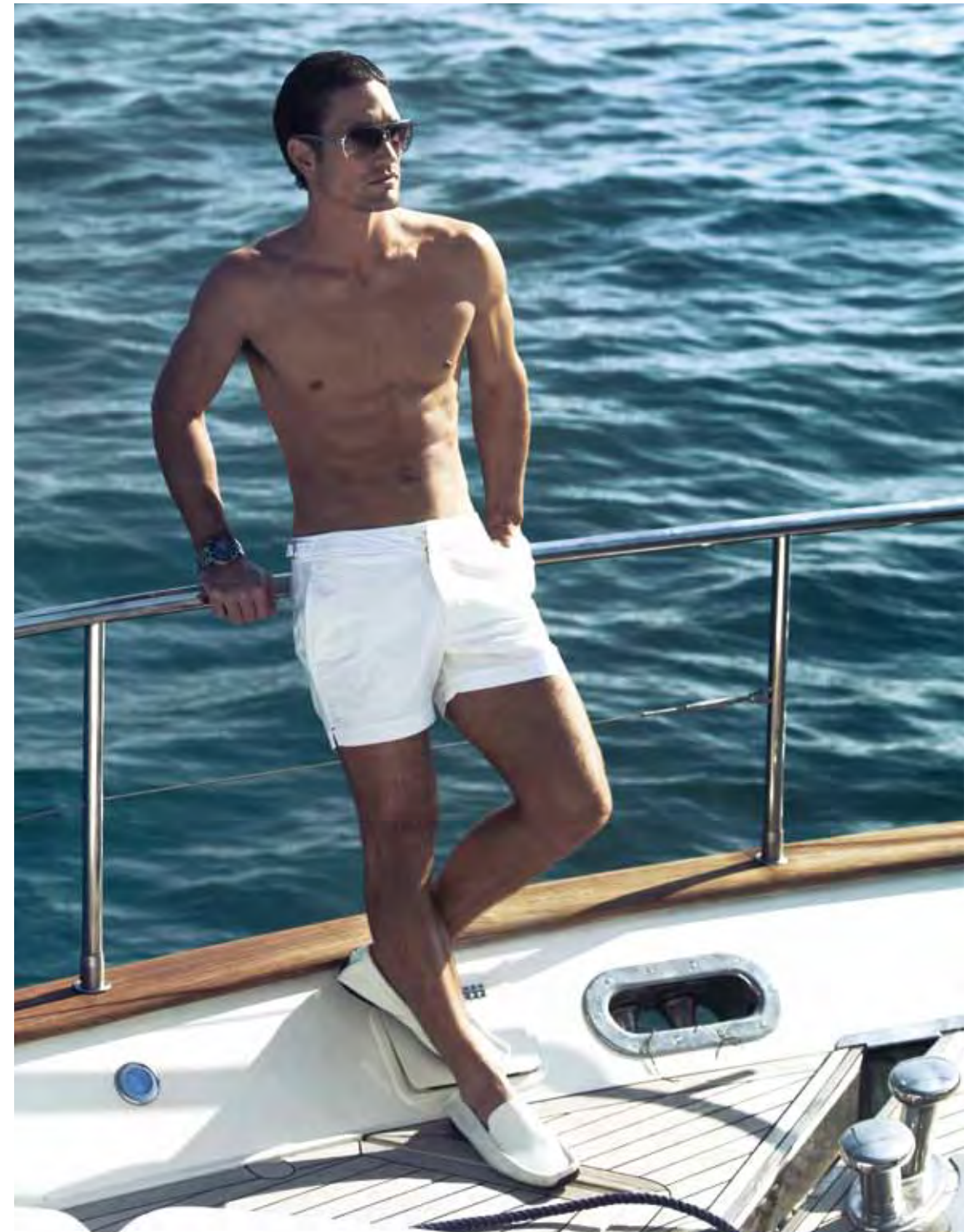
[Her] Men's t-shirt R799, Trener. Shorts R850, Dondup. Christian Dior sunglasses R4 380, Extreme Eyewear. Scarf R2 190, Gucci. Panama hat R599, Fabiani. Surya Gris R32 700, Louis Vuitton.

[Skipper] Pilots outfit, stylists own. Tom Ford sunglasses R4 500, Fabiani. Bracelet R3 500, watch R24 750, both Mont Blanc. Belt R379, Country Road. Damier Azur shoulder bag R10 200, Damier Azur holdall R12 250, both Louis Vuitton.



THE INSIDE STORY

The Princess Emma has four luxurious en-suite cabins, all independently air-conditioned, and can accommodate up to eight guests. On this weekend, a young executive and his partner want privacy and a time-out. Tonight they will sleep in luxury in a king-sized bed in the rosewood and cherry master cabin. The forecast for the next day is sunny, a light wind and a maximum temperature of 24°C. The sunbeds adorn the spacious fly bridge, and the foredeck offers shelter for a safe hour's tanning. Later they will dive off the swimming platform that provides easy access to the water, and then dine on the wide aft deck.



[Above] Shorts R1 890, Neo. Mykita sunglasses R7 390, Extreme Eyewear. Oris watch R34 500, S Bacher. Loafers R299, Country Road.
[Him] T-shirt R2 300, Paul Smith. Shorts R695, Gant. Bline sunglasses R2 950, Extreme Eyewear. Maurice Lacroix watch R11 500, S Bacher. Nokia 8800 Carbon Arte. [Skipper] Polo shirt R795, Gant. Shorts R1 250, Dondup. Mykita sunglasses R7 390, Extreme Eyewear. Belt R2 040, Gucci. Bracelet R3 500 and watch R24 750, both Mont Blanc.

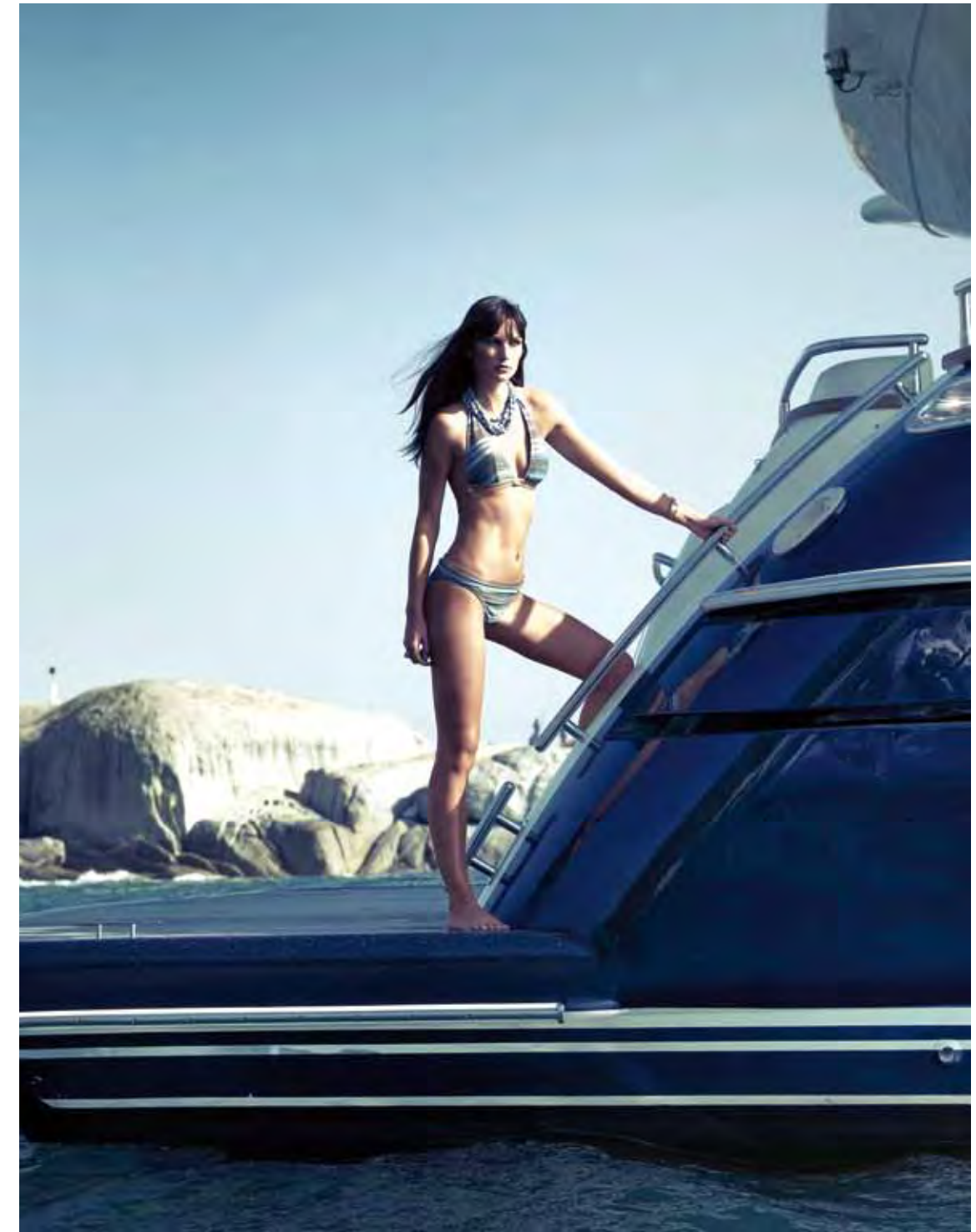


[Above] Vest R3 684, Neo. Shorts R2 999, Fabiani. Maurice Lacroix watch R11 500, S Bacher. Pen R3 310, Mont Blanc. Computer sleeve R6 550, Louis Vuitton. Nikon binoculars R4 750, Cape Union Mart. [Her] Swimsuit R675, Osiris. Ring R78 900, Shimansky. [Him] Swim trunks R1 480, Paul Smith. Maurice Lacroix watch R11 500, S Bacher.



WAVE LENGTHS
 All the Princess Emma's cabins are en suite with television, DVDs and radios. Wireless Internet keeps you connected for business and a well-stocked DVD library offers the latest entertainment, screened in the main saloon on a wide-screen LCD TV with surround sound.

SOLITARY PURSUITS
With such an expansive deck area, guests are able to pursue what they consider rest and relaxation on the Princess Emma.



[Above] Bikini R2 795, Osiris. Necklace R13 000, bracelet R151 000 and ring R28 400, all by Christoff. **[Him]** Cressi one-piece wetsuit R1 495, Duck 'n Dive. Tusa regulator RS200 1st stage, demand valve, octo and two-piece consol, R6 200 and Faber steel cylinder 12l 232bar R3 395, all Duck 'n Dive. Oris watch R34 500, S Bacher. **[Her]** Bikini R825, Osiris. Jacket R2 130, Dondup. Mykita sunglasses R5 390, Extreme Eyewear. Ring R43 000, Christoff. Weight belt R95, 1kg weights R45 each and Rabitech Attack spear gun R950, all Duck 'n Dive.

BEHIND THE SCENES



PRINCESS CHARTERS

To charter on a crewed yacht is remarkably easy. The crew of the Princess Emma has put all their years of yachting experience into a charter service, ensuring you the holiday or day trip of a lifetime. All you need to do is tell them what you're looking for – guest numbers, destinations and any special requests – and they'll be happy to arrange everything. They look after both the big picture – the yacht itself, the crew, finance and insurance – and all the finer details that will make your stay on board so comfortable.

There can surely be no better way to visit a new location than in a top-class yacht. And while cruising along our beautiful Cape coastline, there is so much on offer for you to enjoy: water sports like jetskiing and scuba diving; or just soaking up the rays on the sun deck; alfresco dining with truly romantic backdrops; or simply appreciating being spoilt by an experienced crew that recognises when to allow you your privacy.

For more information on Princess Emma charters, email princessemma@mweb.co.za, or call +27 79 348 0447

TAILOR-MADE FLIPS GIVE A NEW PERSPECTIVE ON CAPE TOWN



Execheli.com is an experienced, professional helicopter service provider that is operated by Base 4 Aviation. This well-established operator

offers across-the-board solutions for anything from tourist charters to business trips and governmental chartering. Execheli.com offers a safe and dedicated service, 365 days a year.

Start your heli-flip at the Victoria and Alfred Waterfront. You can choose from 18 exclusive flights that are offered in and around Cape Town. And for the individuals who want to break away from the traditional offerings, you can take advantage of their extended personalised flights to slightly more far-reaching destinations. Here, the pilot also acts as a tour guide and the helicopter doesn't just fly in a circle – it takes

you to several stops en route. At each, you'll experience something different, be it a wine tasting, a 4x4 adventure, the Big Five or a picturesque lunch – your trip can be completely custom designed to your tastes.

Execheli.com charters open up your options in terms of what you can see in Cape Town, allowing you to take in the scenes and sights from a unique perspective.

For more information on Execheli.com charters, visit www.execheli.com or call Barry Oberholzer on +27 21 913 7723

Stockists Cape Union Mart: 021 425 4559 Christoff: 021 421 0184 Country Road at Woolworths: 021 415 3411 Duck 'n Dive: 021 511 2468/082 928 1590 Dondup: 021 424 4211 Extreme Eyewear: 021 421 1179 Fabiani: 021 425 1810 Gant: 021 425 5317 Geri: 021 425 9281 Gucci: 021 421 8800 Hugo Boss: 021 418 8328 Kluk/CGDT: 083 37780/60 Louis Vuitton: 021 405 9700 Mont Blanc: 021 421 5015 Neo: 021 431 5181 Osiris: 021 418 8513 Paul Smith: 021 418 0007 S Bacher: www.sbacher.co.za Shimansky: 021 425 9888 Trenery at Woolworths: 021 415 3411

DESIGN YOUR OWN CHARTER
Charters are tailor made according to the needs of clients and the time they have available. Where moorings are restricted, a tender boat will be used to transport guests ashore for exploring the local areas, lunch, and shopping. All charters booked are weather and sea-conditions dependent.

A one-day charter may depart the Waterfront mid-morning for Clifton. A barbeque lunch will be served on board, before a relaxing afternoon of sunbathing and swimming. After watching the sun go down, Princess Emma will take a slow cruise along the Atlantic seaboard back to her berth at the Cape Grace marina. Two-day charters may include a night aboard in Simonstown harbour, a cruise around False Bay, returning via Clifton Beach for sundowners and afterwards to the marina for dinner and an overnight stay on board. A three-day charter includes a cruise up the West coast via Dassen Eiland, Yzerfontain and Saldahna Bay. Overnight at Club Mykonos harbour, then take a cruise in Langebaan lagoon to Kraal Baai with a stay overnight. Departure for the Waterfront is at lunch time, and arrival is in time for dinner and an overnight at the marina. For further details on longer charters and variations on the above itineraries, contact Princess Yachts. (See previous page for details).

[Her] Top R1 295, Hugo Boss. Harem pants POA, Klük/CGDT. Pendant R12 690, Neo.



Fashion shot on board the Princess Emma. Justin Polkey is represented by Shine. Hair and make-up: Kevin Epstein. Photographer's assistants: Glen Montgomery. Fashion assistants: Jacqui Turner and Peta Suzanne Oshry. Post-production by Clone

Fashion director: Suzannah Garland